



BAYGROVE RESIDENCES

DUBAI ISLANDS

Dubai Islands Project
Brochure



BAY GROVE RESIDENCES IS
A RESIDENTIAL COMPLEX
CONSISTING OF FOUR
BUILDINGS AND LOCATED
ON THE ARTIFICIAL ISLAND
OF DUBAI ISLANDS.

20 MINUTES TO DOWNTOWN

The coastal area of Jumeirah with its tourist infrastructure is located 10 minutes away by car, and the city center Downtown with the Dubai Mall and the famous skyscraper Burj Khalifa is 20 minutes away by car. In 18 minutes you can drive to Zabeel Park and enjoy the landmark Dubai Frame.

BAYGROVE
RESIDENCES
DUBAI ISLANDS

BAYGROVE
RESIDENCES
DUBAI ISLANDS



+971 (4) 581-4553

+971 (4) 581-4553


BAYGROVE
RESIDENCES
DUBAI ISLANDS

AN ACTIVELY DEVELOPING ARCHIPELAGO OF ISLANDS

Dubai Islands is an archipelago of five artificial islands near the Deira area. Its territory will house residential residences, luxury hotels, entertainment facilities and yacht marinas. Dubai Islands have extended the coastline of Dubai by 20 km, including the beach area. You can get here by land, by car, and by sea. In the near future, more than 80 hotels and resorts of various types will be built on the Dubai Islands.

+971 (4) 581-4553

PROJECT MASTER PLAN

B1

B2

B4

B3

20 МИНУТ
ДО DOWNTOWN



THE LIGHT FAÇADE FITS
HARMONIOUSLY INTO THE COASTAL
ATMOSPHERE OF THE ISLAND.





+971 (4) 581-4553

ENTRANCE GROUP



4 LOBBIES WITH SOFT ZONES IN A SINGLE STYLE

The project lobby is done in light colors and creates an atmosphere of coziness and comfort. There is everything necessary for a pleasant wait: soft furniture of light beige color, a concierge desk, decorative partitions, carpets and plants. A designer chandelier, a bookshelf and paintings complement the interior, making it presentable and stylish.



THE RESIDENCE OFFERS APARTMENTS WITH 1, 2, 3 BEDROOMS, AS WELL AS DUPLEX APARTMENTS WITH 4 BEDROOMS AND PENTHOUSES.



SPACIOUS APARTMENTS IN BEIGE TONES

The interiors in neutral beige tones create an atmosphere of coziness and tranquility. The apartments offer panoramic views of the azure Persian Gulf. Every day you can enjoy the fresh sea breeze away from the noise of the city.



KITCHEN COLOR SCHEMES



EQUIPPED
BATHROOM

VISUALIZATION OF THE OFFICE


BAYGROVE
RESIDENCES
DUBAI ISLANDS

+971 (4) 581-4553



LIVING ROOM INTERIOR

+971 (4) 581-4553



WARDROBE


BAYGROVE
RESIDENCES
DUBAI ISLANDS

+971 (4) 581-4553

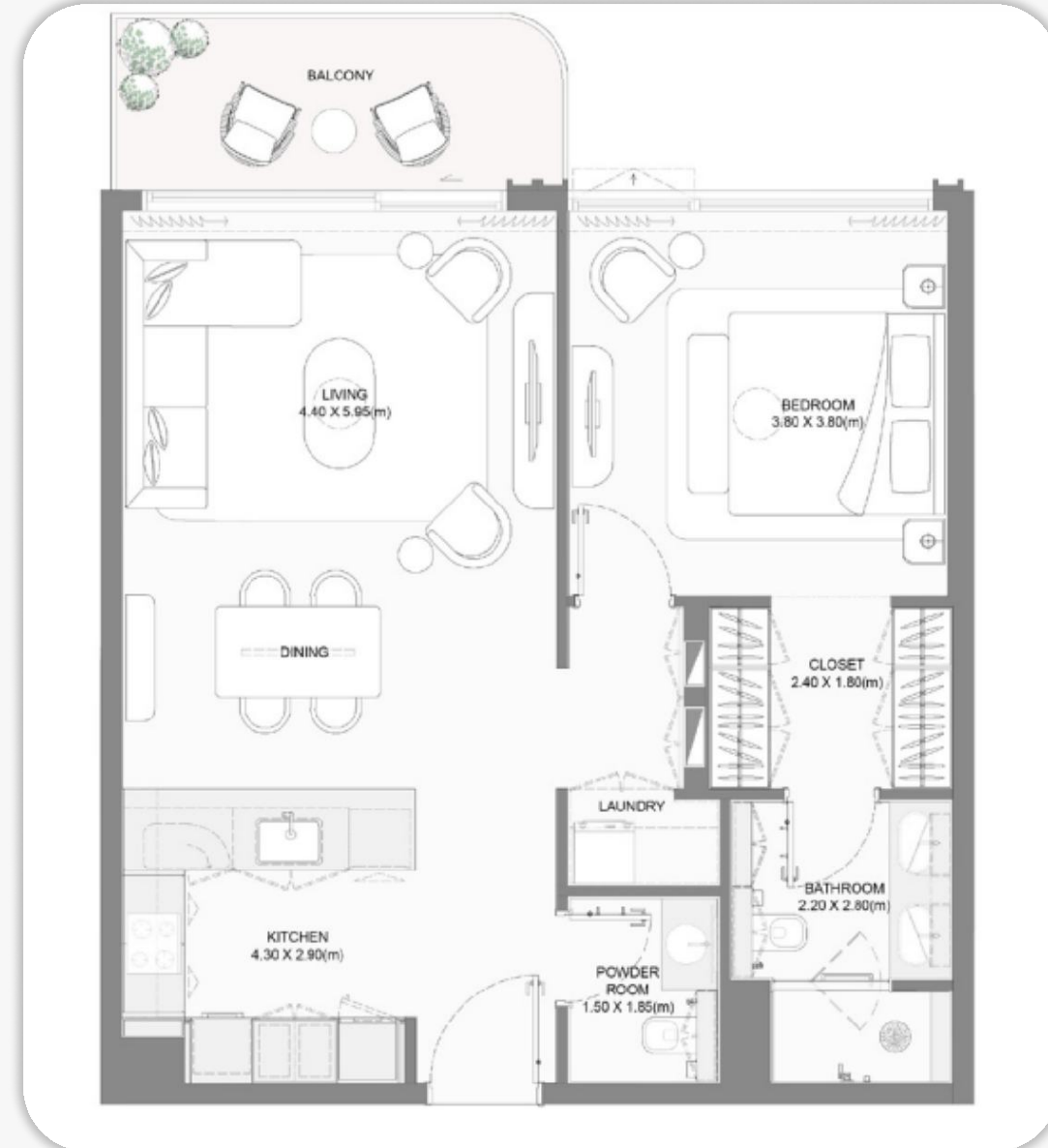




EQUIPPED
BATHROOM

1-BEDROOM APARTMENT LAYOUTS

+971 (4) 581-4553



2-BEDROOM APARTMENT LAYOUTS

+971 (4) 581-4553



2-BEDROOM APARTMENT LAYOUTS



3-BEDROOM APARTMENT LAYOUTS



4-BEDROOM APARTMENT LAYOUTS





SPACIOUS GYM

For those who prefer an active lifestyle, our center has a modern gym and special areas for yoga.

TAKE A PLEASANT DIP IN THE COOL POOL OR RELAX ON THE PRIVATE BEACH



CHILDREN'S PLAYROOM



RECREATION ROOM
WITH BOARD GAMES





PRIVATE BEACH

The unique location of the complex on the azure coast of the Persian Gulf provides residents with access to a private sandy beach stretching 700 meters.

PRIVATE BEACH

+971 (4) 581-4553



PRIVATE BEACH

+971 (4) 581-4553



THE PROJECT WILL BE BUILT IN THE 3RD QUARTER OF 2028





THE DEVELOPER OF THE PROJECT IS NAKHEEL PJSC

Nakheel PJSC is a leading Dubai developer specialising in residential, retail, hospitality and leisure. The company's flagship projects include Palm Jumeirah, Palm Jebel Ali, Palm Deira and The World.

Dubai
+971 (4) 581-4553



Abu Dhabi
+971 (4) 581-2364

WE HELP PEOPLE TO BUY PROPERTY

We sell deluxe, premium and business class property
in more than 140 residential developments in Dubai.
We will be the first to congratulate you on buying a new home.
We work with love and with no commission.

